

Net Commander User Guide

Version 1.0 May 2019

Copyright 2019 ANSER Coding Inc. The information contained herein is subject to change without notice. Reproduction, adaptation or translation without prior written permission is prohibited, except as allowed under the copyright laws.

Table of Contents

1. Introduction.....	3
1.1 Disclaimer	3
1.2 Required tools	3
2. Installation	4
2.1 PC software installation.....	4
2.1.1 USB to RS-485 driver installation:	4
2.1.2 Net Commander installation:	4
2.2 USB Ethernet adapter.....	8
2.3 USB wireless adapter	8
3. Function introduction.....	9
3.1 Run the program	9
3.2 Main menu introduction	9
3.3 Group Management: Search and add U2 printer(s).....	10
3.4 Printer Configuration: Create printer configuration files (.ini)	13
3.5 Message editor	14
3.6 Upload: messages	15
3.7 Upload: Configuration	18
3.8 Refresh button.....	18
3.9 Program settings.....	18

1. Introduction

1.1 Disclaimer

Net Commander is built for setting up multiple ANSER U2 printers in a more efficient way. Its main function include deploy configuration to all managing printer(s), deploy message file, start or stop printing.

We highly discourage users to perform other usage that is not included in this manual. For more system integration requirement or customization needs, please contact ANSER Coding Inc.

1.2 Required tools

- ANSER U2 USB to RS485 converter kit
- Windows PC
- Net commander software
- Message Pro II/ Message Pro Plus software

2. Installation

2.1 PC software installation

2.1.1 USB to RS-485 driver installation:

Please refer to “U2 USB to RS485 Kit User Manual”.

2.1.2 Net Commander installation:

Step1: Double click “Net Commander_2.190314104430001.exe” installer.



Name	Type	Size
 Key.txt	Text Docum...	1 KB
 NetCommander_2.190314104430001.exe	Application	27,049 KB

Figure 2-1

Step2: Click “Next >”.

(It is recommended that to close all other application before installation.)

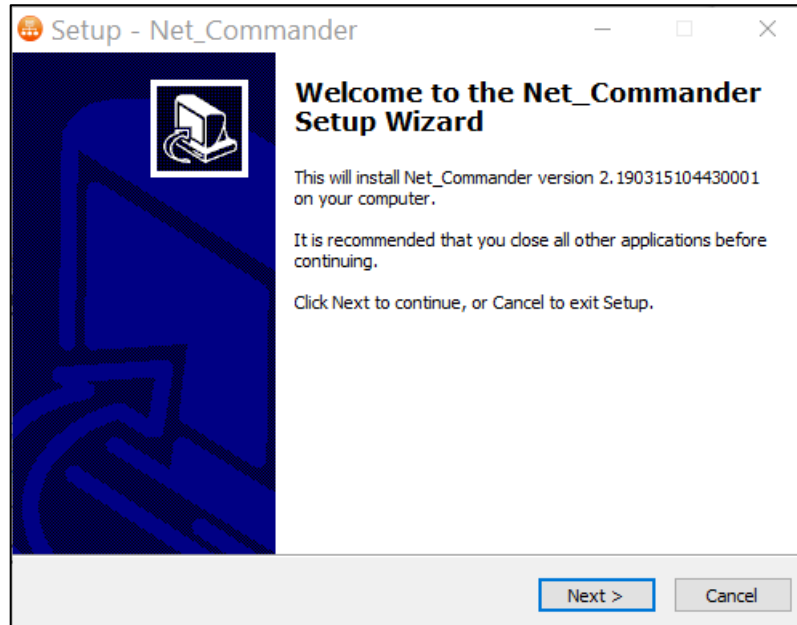


Figure 2-2

Step3: Type in a valid product serial number and click “Next >”

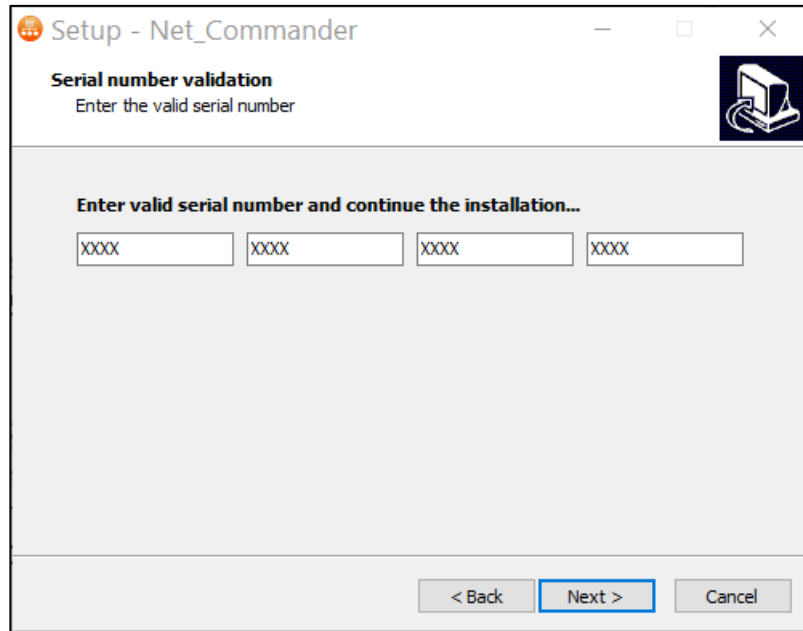


Figure 2-3

Step4: Select destination location and click “Next >”.

(Default location: “C:\Program Files (x86)\Net_Commander”)

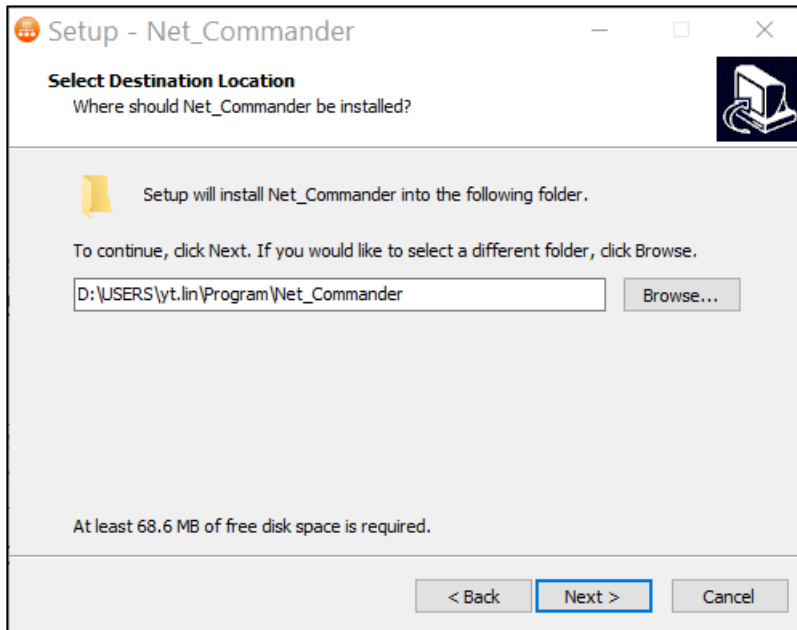


Figure 2-4

Step5: Select to choose if a program's shortcut is created in the installation.

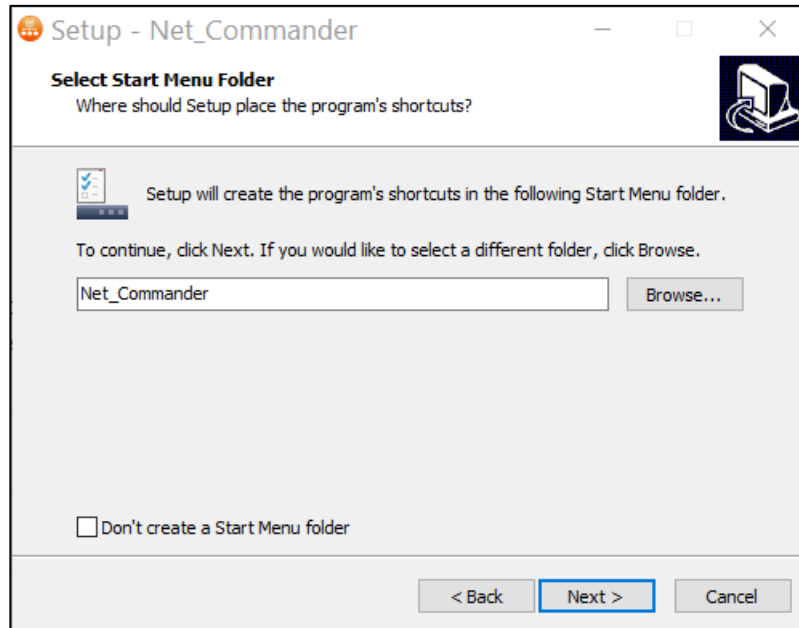


Figure 2-5

Step6: Select if a desktop icon is created in the installation.

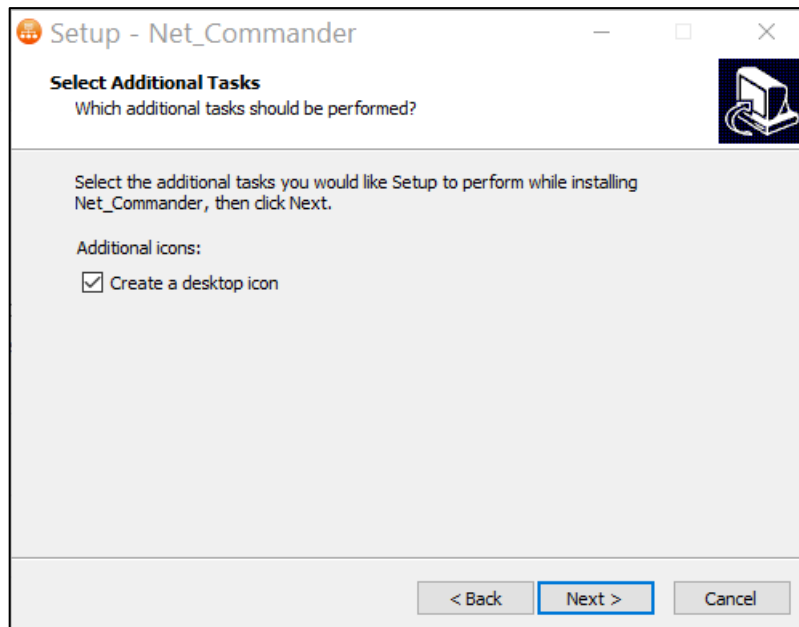


Figure 2-6

Step7: Review the installation parameter then click “Install”.

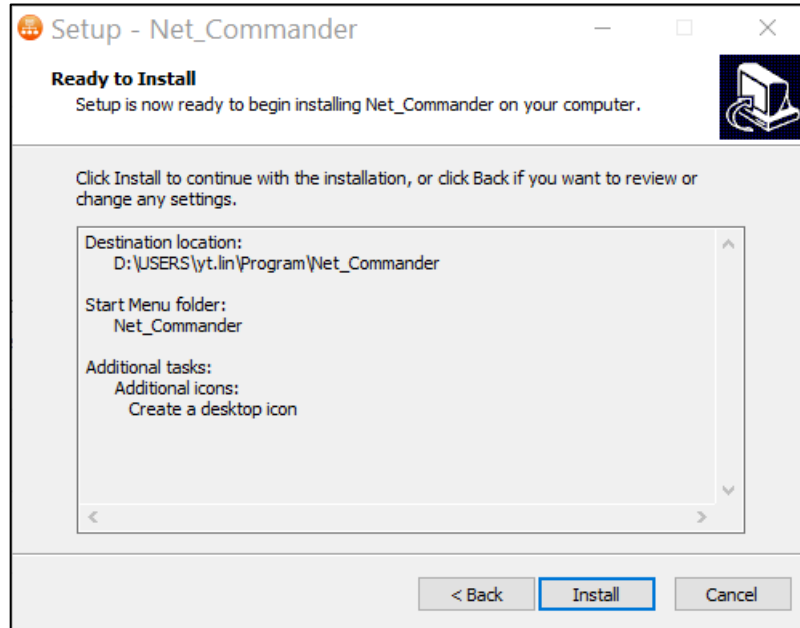


Figure 2-7

Step8: Click “Finish” to close the installer when the installation is complete.

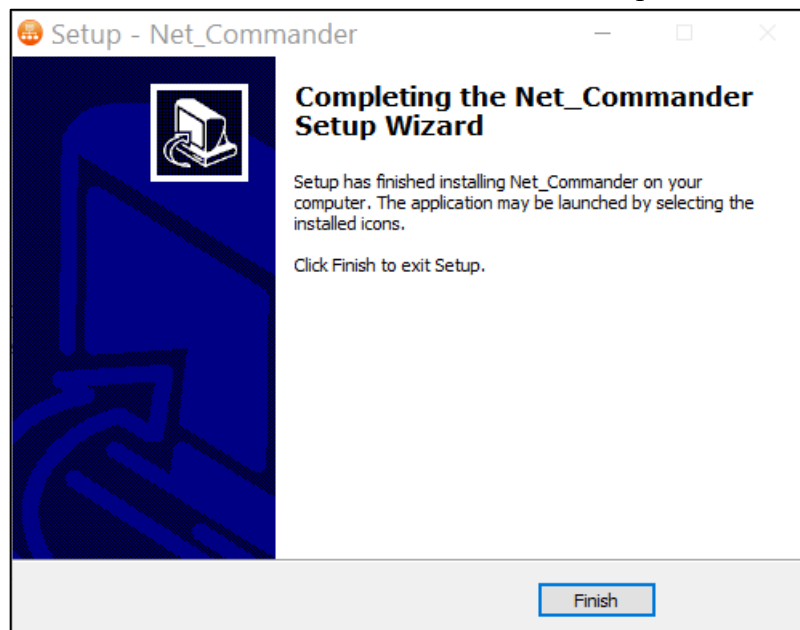


Figure 2-8

2.2 USB Ethernet adapter



USB2.0 Ethernet adapter

ANSER's U2 ProS printer support wired connection via Ethernet, which is fast and with high throughput. It is a better choice for users that required sending large excel string file.

2.3 USB wireless adapter



Mini USB2.0 Wi-Fi adapter

3. Function introduction

3.1 Run the program



Net_Comm_ander

Double click “Net_Commander” icon to execute.

3.2 Main menu introduction

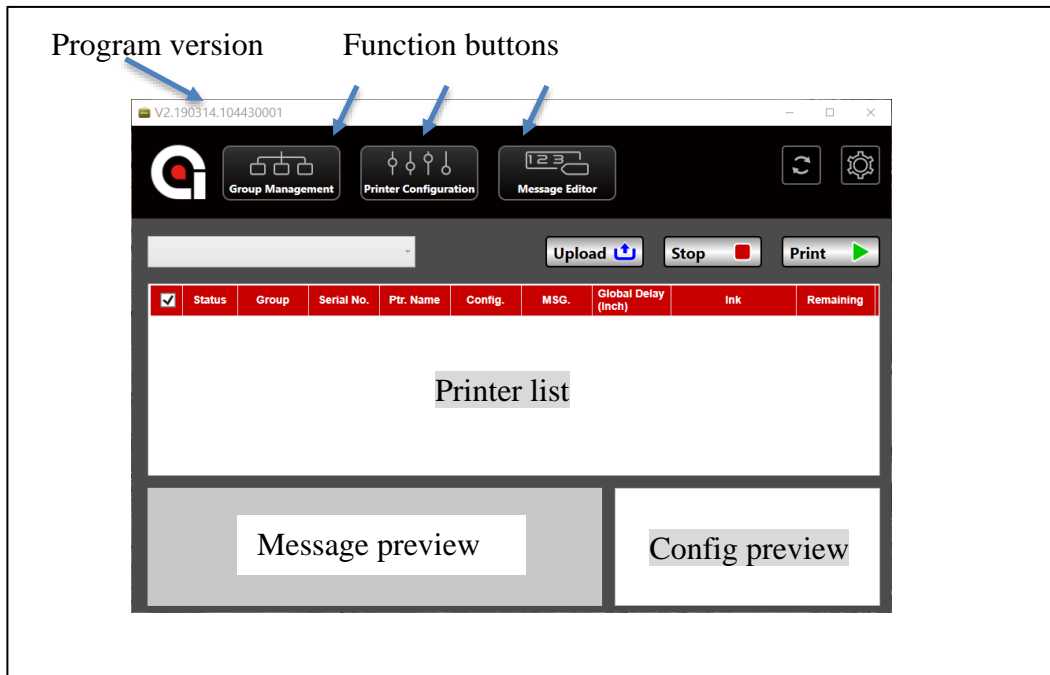


Figure 3-1

3.3 Group Management: Search and add U2 printer(s)

In “Group Management”

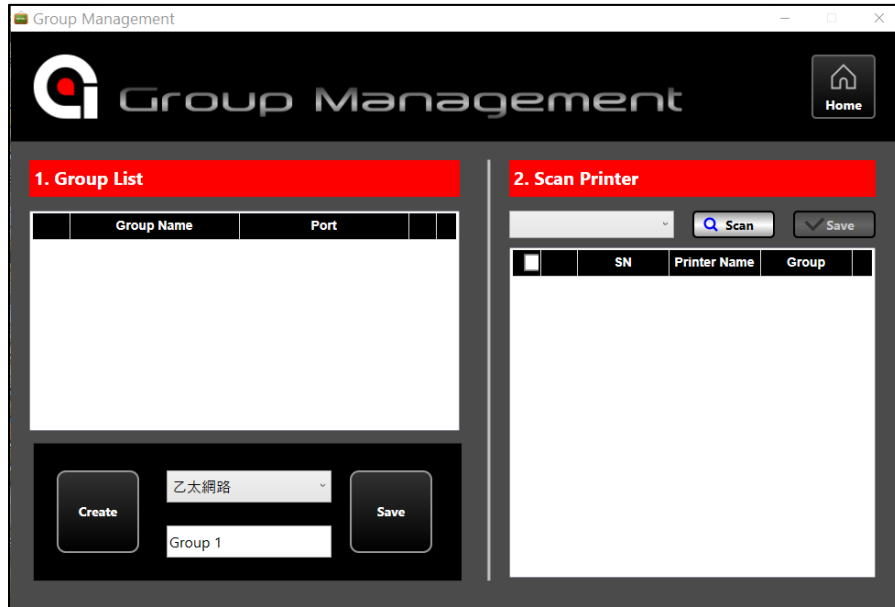


Figure 3-2

Step1: Create a group by clicking the “Create” button at the lower left corner.

Step2: Choose printer connected type, take serial port “COM5” for example.

Find the connected port number in “Device Manager”.

(Right click “This PC” > properties > “Device Manager”)

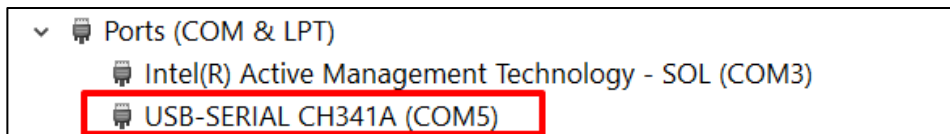


Figure 3-3



Figure 3-4

Step3: Name your group (“Group 1” as default) then click “save”.

Note: The idea of group is based on connectivity. For example, 3 printers in a same group are all connected to COM port 5 on this PC. The “Ethernet” and “Wi-Fi” type are similar and identify printers by IP addresses.

Step3: Scan for printers.

Click the scan button to scan in the group we set in the previous steps. This step may takes a few minutes based on network condition. Once all of the desired printers has been found, click “Stop” button to stop the scan. A report of the scan will be shown (Figure 3-6).



Figure 3-5

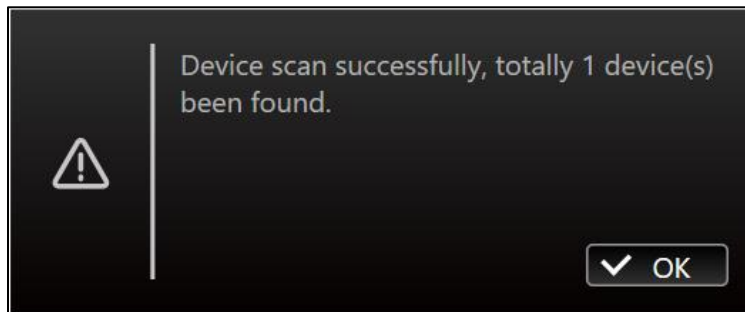


Figure 3-6

Step4: Check and name your printers with up to 10 characters, click “Save” when complete.



Figure 3-7

Step5: Finish adding printers.

Create groups and scan other printers if needed. Click the “Home” button on the upper right corner when complete.

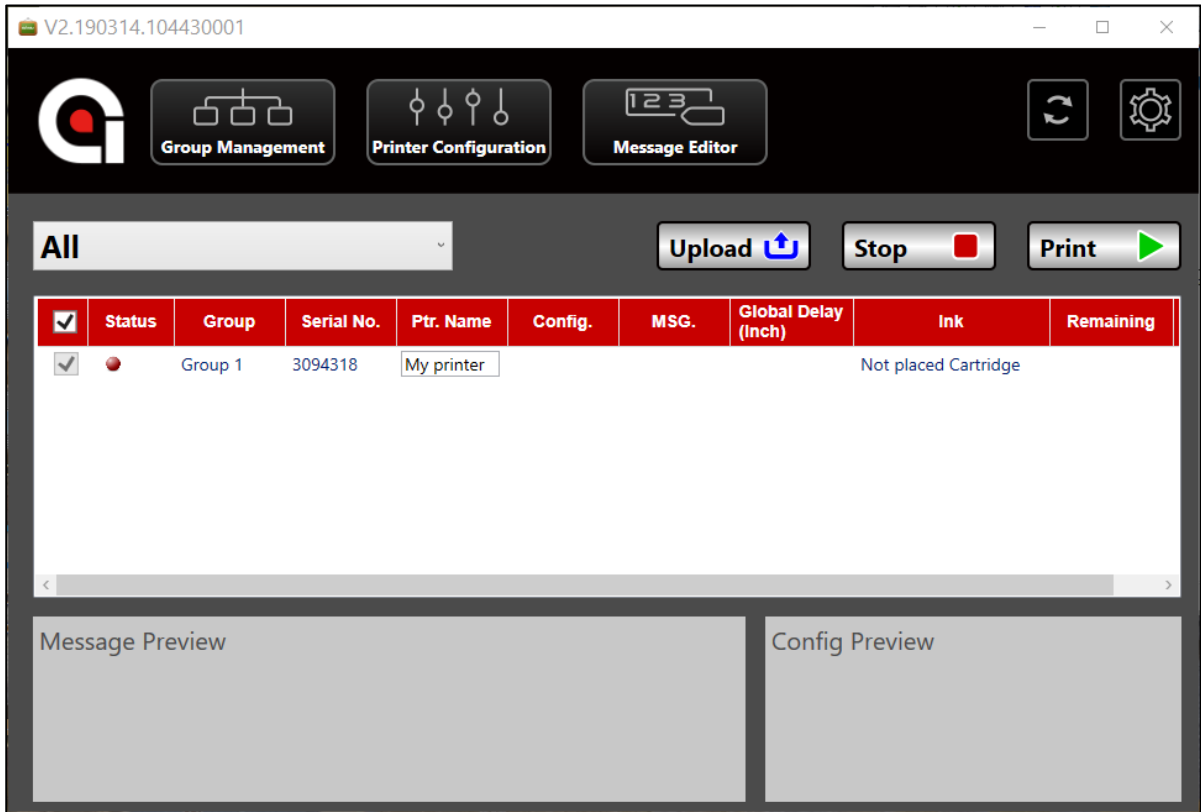


Figure 3-8

3.4 Printer Configuration: Create printer configuration files (.ini)

In “Printer Configuration”.

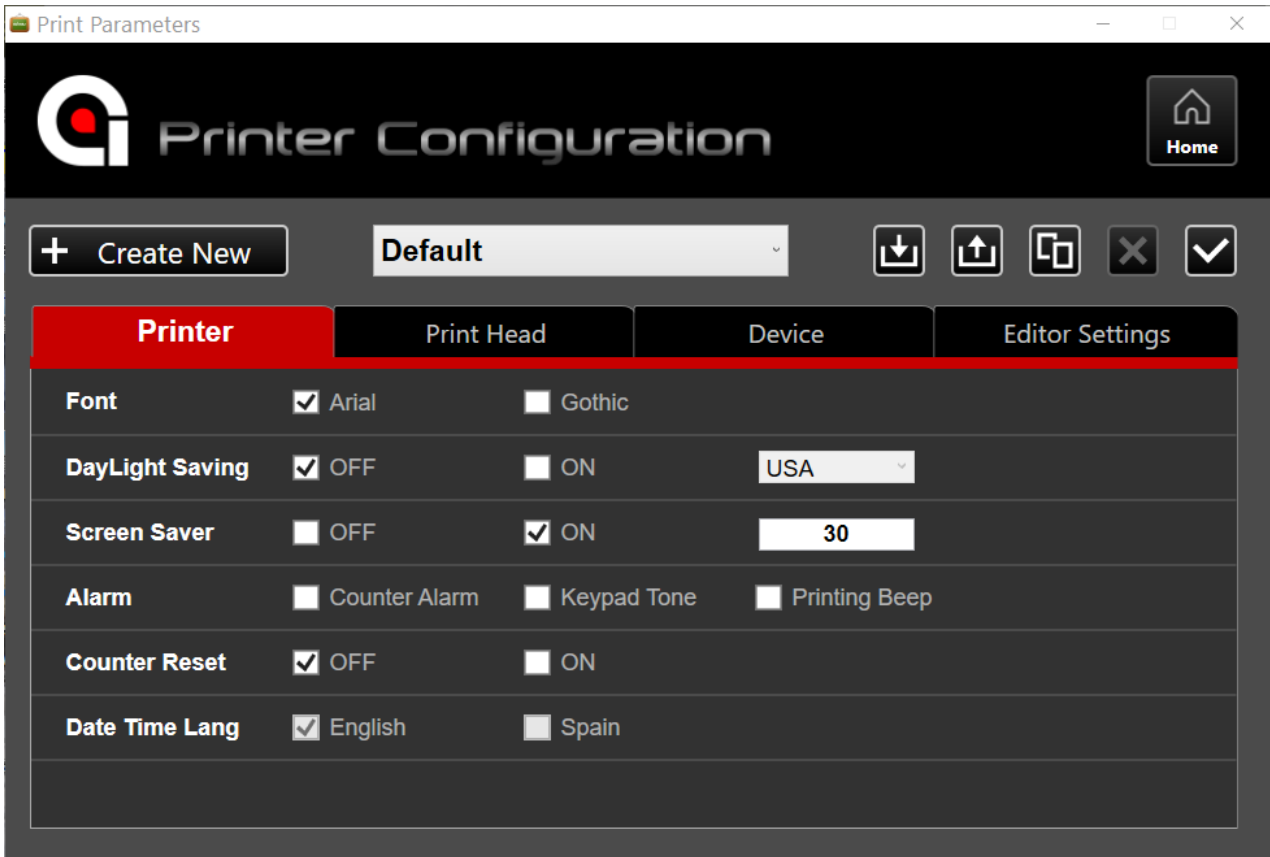



Figure 3-9

Step1: Create a new configuration profile by clicking .

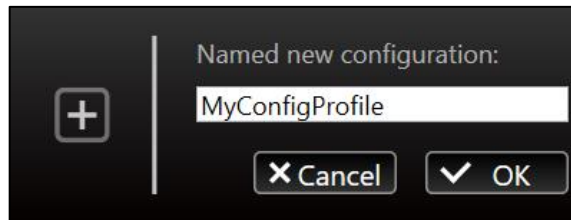







Figure 3-10

Step2: Apply customized settings.

(More detail about each settings will be introduced in section 4.)

Step3: Configuration file options.

Table 3-1

Icon	Description
	Import, to import an existing “.ini” file.
	Export, to export the current configuration as an “.ini” file. Remember to “Save” the parameters before exporting.
	Copy, to create a duplicate configuration profile.
	Delete, to delete a configuration.
	Save, to save the settings.

※ For detail of each parameter, please refer to “U2 Printer User Manual: Section 4.5”.

3.5 Message editor

Please refer to “Message Pro II User Manual”.

3.6 Upload: messages

For how to edit messages, please refer to “Message Pro User Manual”.

Following steps will guide you to upload a message to multiple printers.

Step1: At the main menu, click  to open “Upload to Printers” window.

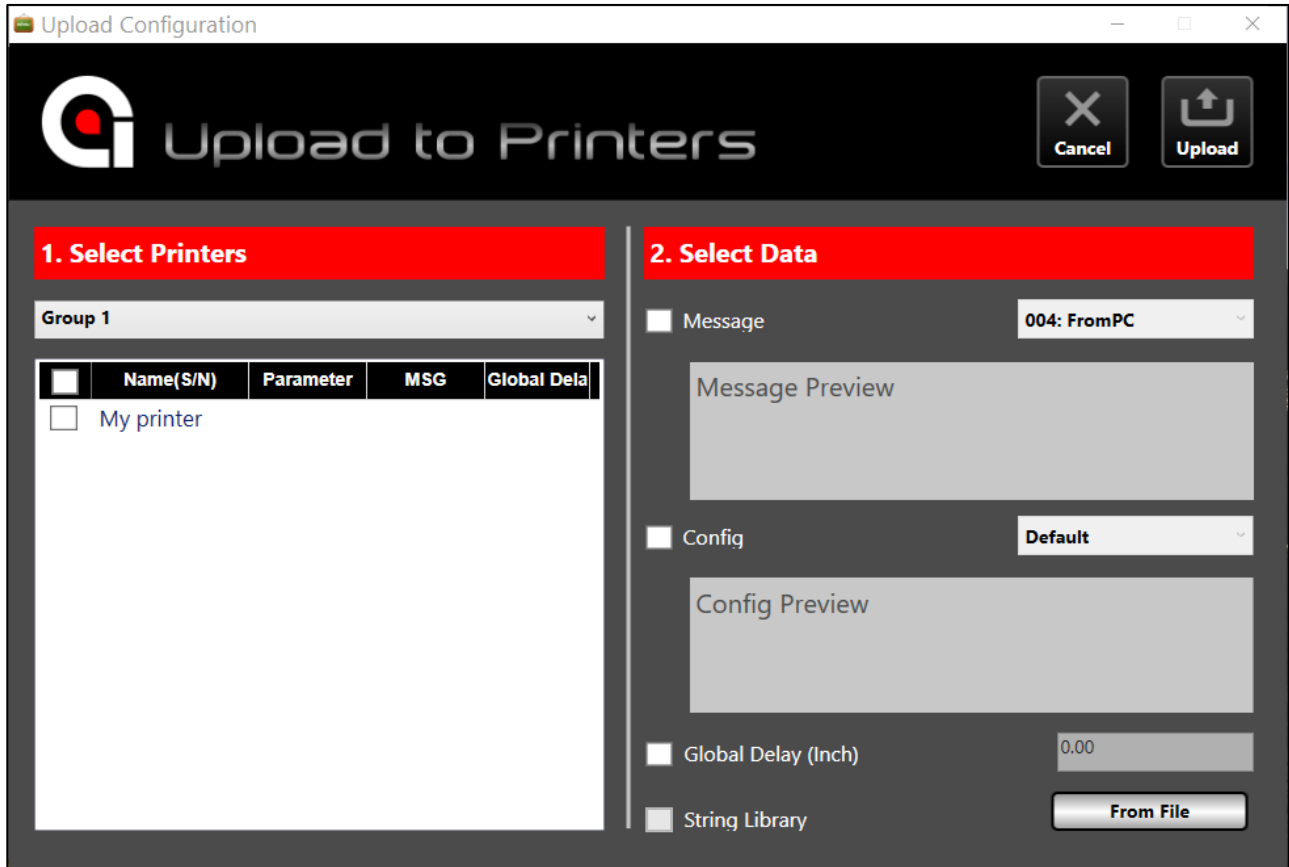


Figure 3-11

Step2: Select target printers by marking the printers where our message will be uploaded to.



Figure 3-12

Step3: Select the message.

Chose the message you want to upload. Make sure to uncheck “config” and “Global Delay” if not altering settings on printers.

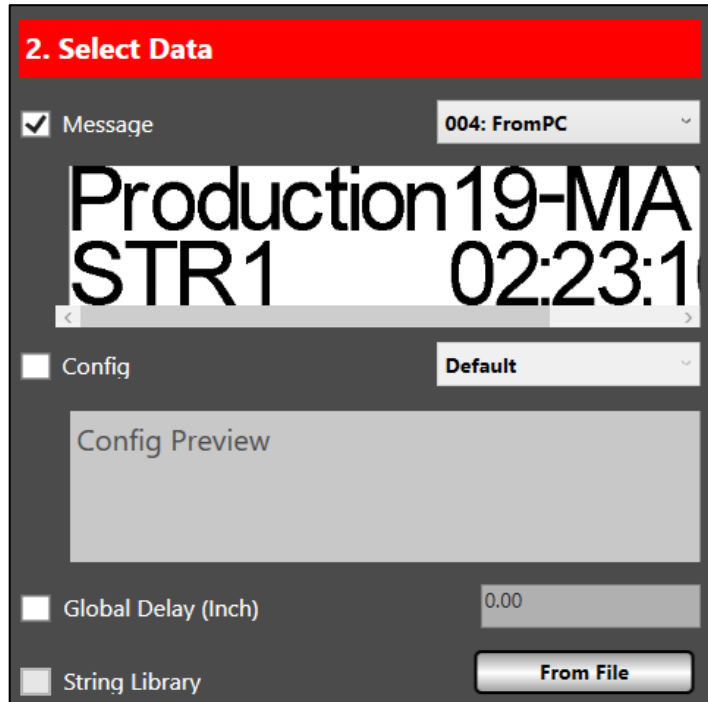


Figure 3-13

Step4: (optional) String library source.

Mark “String Library” and click **From File** button.

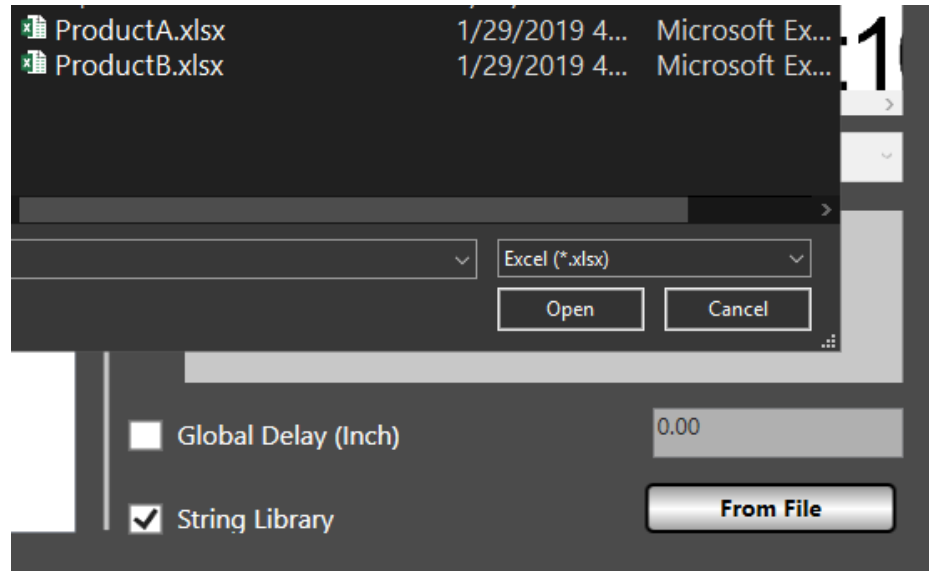


Figure 3-14

Choose an excel file contains String columns. A sample file should looks like Figure 3-13.

	A	B	C	
1	19858	1001/001	29/06/2019	
2	19858	1001/001	29/06/2019	
3	19858	1001/001	29/06/2019	
4	19858	1001/001	29/06/2019	

Figure 3-15

Set the area in the excel file to include as a string library. Click OK.

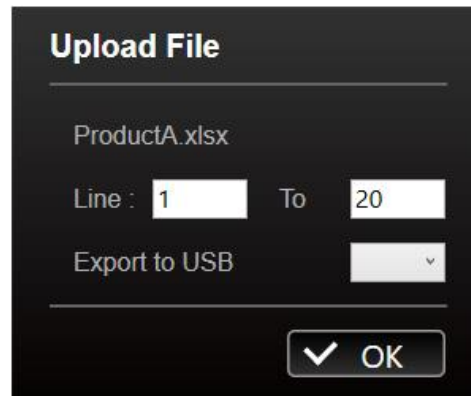



Figure 3-16

Step5: Upload and Click “Cancel” to navigate back to Main menu.

3.7 Upload: Configuration

Step1: At the main menu, click  to open “Upload to Printers” window. (Figure3-9)

Step2: Select target printers. (Figure3-10)

Step3: Mark the “Config” checkbox on the right and select profile we want to upload.

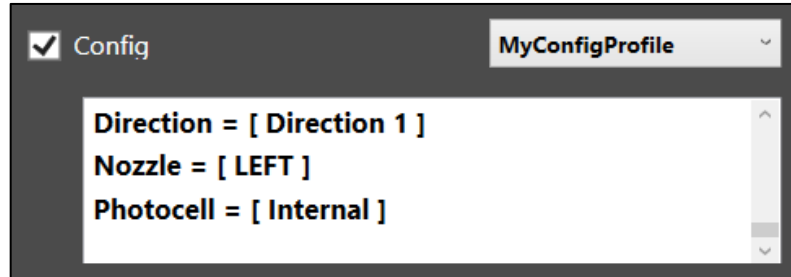


Figure 3-17

As a reminder, the original setting within the printer(s) will be overwritten when uploaded with a new configuration using Net Commander.

3.8 Refresh button



Net Commander only synchronizing with the printer(s) once every set period. By clicking the refresh button, will update printer status immediately.

3.9 Program settings



Settings has the options to change UI language and Unit. Most importantly, as mention in section 3.7, we also have the option to change refresh frequency.

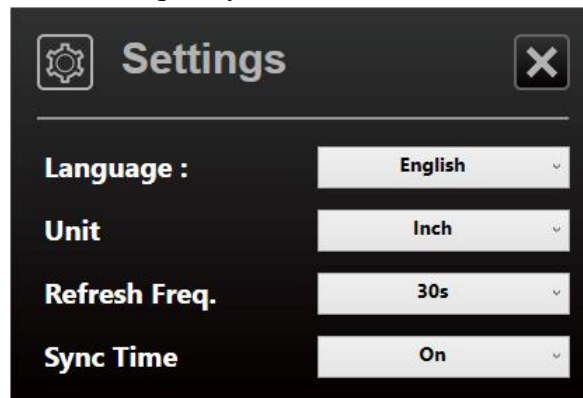


Figure 3-18



WWW.ANSER-U2.COM