



A1 Accessory

–General Catalogue–

V.1 2023.07

A1 Printer Set



A1 Inkjet Printer Set (4 demands)

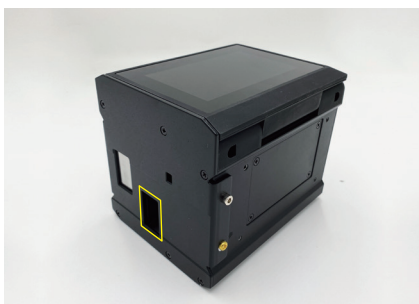
- Bracket : 30mm *2, 38mm *1
- Angle bracket base *1
- Bracket clamp *2
- C plate *1
- Guide plate *1
- Power adapter 60W *1
- Power cord *1
- Hexagon wrench kit *M8 *1, M4 *1, M2.5 *1
- Screw kit : M4xL8 *2, M4xL10 *2, M8xL30 *4, M8xL20 *4, M8 washer *4, M8 nut *4
- Ground wire *1



0.5" Single guide plate



0.5" Stitch guide plate

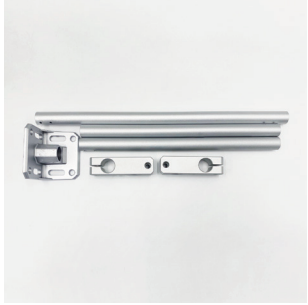


1" Single guide plate



1" Stitch guide plate

Accessory Kit



A1 Bracket Kit

- Rod (L=30/38cm) *2
- Bracket clamp *1
- Bracket base *1
- Hexagon wrench kit *M8 *1, M4 *1, M2.5 *1
- Screw kit : M4xL8 *2, M4xL10 *2, M8xL30 *4



A1 Printhead Blanking Cover Kit

- Printhead Blanking Cover *1
- Printhead Blanking Cover-Long *1



A1 Front Plate Kit(0.5")

- 0.5" Front Plate *1
- 0.5" Printhead Clip *2



Anti-Shock Mechanism-Heavy Duty

- HD Anti-shock mechanism



C Shaped Plate-Heavy Duty

- C shaped plate-Heavy Duty
- Screw kit *1



Anti-Shock Plate

- Guide Plate *1
- Screw kit *1



A1 Front Plate-1"

- 1" Front plate



Cartridge Housing Clip

- 0.5" Printhead Clip

External Accessory



300 DPI Encoder Kit

- 2,500 PPR, 5-30VDC
- 2m cable with DB9 head
- Measuring wheel Ø 67.2mm
- Bracket
- M8-4pin to DB9 30cm cable
- Screw kit : M6xL20 *6, M6 nut *6, M6 washer *6



400 DPI Encoder Kit

- 2,500PPR, 5-30VDC
- 2m cable with DB9 head
- Measuring wheel Ø 49.7mm
- Bracket
- M8-4pin to DB9 30cm cable
- Screw kit : M6xL20 *6, M6 nut *6, M6 washer *6



1,200 DPI Encoder Kit

- 10,000PPR, 0.020 mm/pulse
- 10~30VDC, 100mA
- Measuring wheel 200mm circumference
- Spring-loaded arm
- M8-4Pin to M12-8Pin 5m cable
- Screw kit : M6xL20 *4, M6 nut *4, M6 washer *4



IR Reflective Sensor Kit

- IR reflective sensor, NPN, 300mm (max)
- M8-4pin 35cm cable
- Mounting bracket
- Screw kit : M3xL4.5 screw *4



IP65 Alarm Kit

- IP65 dust/humidity protection rating
- 24VDC, 40mA (max)
- Red, Yellow, Green light modules
- 8-tone selectable buzzer
- Wall-mount bracket
- M8-6pin 2m cable

Cable & Connector



M8-4 Cable

- M8-4pin 2m cable for encoder/sensor



M8-4 Open Wire Cable

- M8-4 pin 2m open wire cable for encoder/sensor



M8-6 Open Wire Cable

- M8-6 pin 2m open wire cable for kit



M8-8 Open Wire Cable

- M8-8 pin 1.5m open wire cable for serial com /RS-232/RS-485



M8-DB9 Cable

- M8-4pin to DB9 30cm cable
- Use to convert U2 series encoder/sensor



M16-14 Cable

- M16-14pin, Printhead cable (2/5/10/15m)



M8-4 1M/2F Splitter Connector

- Use to combine the sensor input and the encoder input to a printhead M8-4 female port



M8-4 1F/2M Splitter Connector

- Two controllers share the same encoder & sensor via 1F/2M splitter connector

Adapter & Power Cord



60W Power Adapter (C6)

- Input : 110V~240Vac, 1.4A, 50-60Hz
- Output : 19Vdc 3.2A



AC Power Cable (AU)

- AC power cord
- Plug=SL-16+SL-3, L=180±5cm



AC Power Cable (CN)

- AC power cord
- Plug=QP-012+QP-007, L=180±5 cm



AC Power Cable (EU)

- AC power cord
- Plug=SL-9+SL-3, L=180±5cm



AC Power Cable (JP)

- AC power cord
- Plug=SL-2+SL-3, L=180±5cm



AC Power Cord (UK)

- AC power cord
- Plug=QP-026+SL-3, L=180±5cm



AC Power Cable (US)

- AC power cord
- Plug=SL-2+SL-3, L=180±5cm



AC Power Cable (BR)

- AC power cord
- Plug=SL-12+SL-16, L=180±5cm"



ANSER
General Catalogue